

Crossword

The crossword puzzle consists of the following words:

- 1** CRISPI (Across)
- 2** SAND (Down)
- 3** LOAF (Down)
- 4** CRISPI (Across)
- 5** BAKED (Across)
- 6** KUR (Down)
- 7** COEN (Across)
- 8** M (Across)
- 9** VAN (Down)
- 10** B (Across)
- 11** DONUT (Across)

Cartoon illustrations of various baked goods are scattered around the puzzle, each with a small black circle containing a number from 1 to 11. The items include a chocolate chip cookie, a hamburger bun, a star-shaped cookie, a chocolate chip cookie, a slice of toast, a loaf of bread, a cupcake, a chocolate chip cookie, a donut, a hot dog, and two square cookies.

Crossword

A crossword puzzle grid with 11 numbered clues and corresponding fruit illustrations. The clues are:

- 1. Watermelon
- 2. Orange
- 3. Apple
- 4. Pear
- 5. Lemon
- 6. Peach
- 7. Cherry
- 8. Strawberry
- 9. Pomegranate
- 10. Plum
- 11. Mango

The crossword grid contains the following letters:

- Across 1: W _ _ _ _ _ _ _ N
- Across 2: _ O _ _ _ _ _ _ _
- Across 3: A _ _ _ _ _ _ _
- Across 4: P O M _ _ G _ _ N _ _ E
- Across 5: _ _ _ _ _ _ _ _ _
- Across 6: P _ _ _ E _ _ _ _ _
- Across 7: S _ _ _ W _ _ _ R _
- Across 8: _ _ _ _ _ _ _ _ _
- Across 9: _ _ _ _ _ _ _ _ _
- Across 10: _ P _ _ _ _ _ _ _
- Across 11: _ _ _ _ _ _ _ _ _
- Down 1: _ _ _ _ _ _ _
- Down 2: _ _ _ _ _ _ _
- Down 3: _ _ _ _ _ _ _
- Down 4: _ _ _ _ _ _ _
- Down 5: _ _ _ _ _ _ _
- Down 6: _ _ _ _ _ _ _
- Down 7: _ _ _ _ _ _ _
- Down 8: _ _ _ _ _ _ _
- Down 9: _ _ _ _ _ _ _
- Down 10: _ _ _ _ _ _ _
- Down 11: _ _ _ _ _ _ _

Crossword

1 P

2 B

3 T

4 C

5

6 D

7 C

8

9 S D I

10 T T

10

5

7

10

5

7

Crossword

1 C ... F ... R

2 C ... C

3 T ...

4 E ...

5 C ...

6 ...

7 A ...

8 C ...

9 B ...

10 G ...

11 P ...

12 R ...

Illustrations include: a chili pepper (8), an avocado (7), a tomato (3), an eggplant (4), a carrot (5), a cucumber (2), a cauliflower (1), a radish (12), a broccoli (9), a pumpkin (11), and a garlic bulb (10).

Crossword



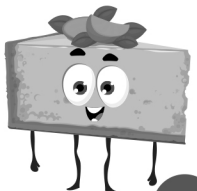
2

B



3

C



1

C

E



9

K

H

E

8

C



P

D

7



5

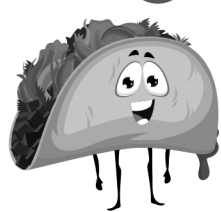
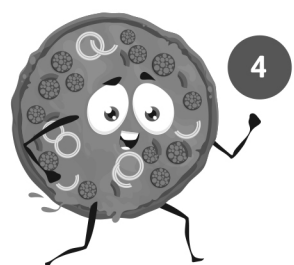
B



T

6

4



Crossword

A crossword puzzle grid with 11 numbered clues and corresponding cartoon illustrations of various desserts. The clues are:

- 1. Meringue
- 2. Merin
- 3. D
- 4. B
- 5. C
- 6. W
- 7. M
- 8. I
- 9. B
- 10. C
- 11. J

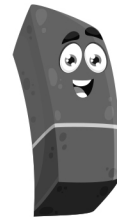
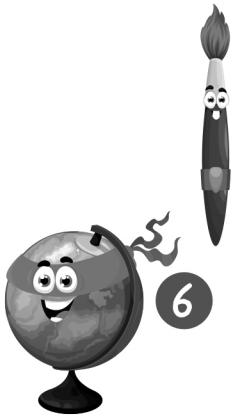
The grid is a 12x12 grid. The clues are placed as follows:

- 1. M (Across, Row 5, Column 4)
- 2. M (Down, Column 7, Row 2)
- 3. D (Across, Row 6, Column 2)
- 4. B (Across, Row 7, Column 4)
- 5. C (Down, Column 5, Row 4)
- 6. W (Across, Row 8, Column 5)
- 7. M (Across, Row 4, Column 2)
- 8. I (Across, Row 9, Column 2)
- 9. B (Down, Column 3, Row 2)
- 10. C (Down, Column 7, Row 9)
- 11. J (Across, Row 11, Column 5)

Cartoon illustrations of various desserts are placed around the grid, each with a number in a circle next to it:

- 1. Meringue
- 2. Merin
- 3. D
- 4. B
- 5. C
- 6. W
- 7. M
- 8. I
- 9. B
- 10. C
- 11. J

Crossword



A crossword puzzle grid with the following letters filled in:

- 1 S (down)
- 2 B (across)
- 3 B (down)
- 4 M (down)
- 5 N (down)
- 6 G (across)
- 7 P (down)
- 8 (across)
- 9 S (across)
- 10 (across)
- 11 C (across)
- 12 R (across)